

# PIONEERING GREEN DRY-CONSTRUCTION



**EPD**<sup>®</sup>  
THE INTERNATIONAL EPD<sup>®</sup> SYSTEM



MEMBER

THOMAS BELL-WRIGHT

BS EN 12467

PSB Singapore



At Ramco Industries we are steadfast in our commitment to developing green building materials. The concept of green building incorporates and integrates a variety of strategies during the design, construction and operation of building projects. The use of green building materials and products represents one important strategy in the design of a building.

Green building materials offer specific benefits to the building owner and building occupants

- Reduced maintenance/replacement costs over the life of the building
- Energy conservation
- Improved occupant health and productivity
- Lower costs associated with changing space configurations
- Greater design flexibility

## HILUX BOARDS

### SALIENT FEATURES

Fire Resistant, Water Resistant  
 Termite Resistant, Fungus Resistant  
 Sound Resistant, Light Weight,  
 High Impact Strength and Good Workability

### APPLICATION

Partitions, Wall Panellings  
 Seamless Ceilings,  
 Duct & Column Encasements  
 Furnitures, Lattice Panels  
 Eaves & Soffit Lining, Lift Shafts  
 Fire Doors and Prefabricated Structures



### SIZES ( in mm )

1220 x 1220, 1830 x 1220 & 2440 x 1220

### THICKNESS ( in mm )

6, 8, 10, 12 & 16



### SIZES ( in mm )

595 x 595, 610 x 610, 1195 x 595 & 1220 x 610

### THICKNESS ( in mm )

6 & 8

## HILUX CEILING TILES

### SALIENT FEATURES

Available in  
 Plain and 5 punched patterns.  
 Fire Resistant  
 Water Resistant,  
 Termite Resistant  
 Fungus Resistant and  
 Excellent Thermal Insulation

### APPLICATION

Grid Ceilings  
 Wall Linings and Wall Panellings





# HILUX

## ACOUSTIC AND DESIGNER TILES

### SALIENT FEATURES

- Available in
- 7 Acoustically tuned patterns
- Superior, Acoustics Properties
- Sound Resistant, Fire Resistant
- Water Resistant, Termite Resistant
- Fungus Resistant and Light Weight

### APPLICATION

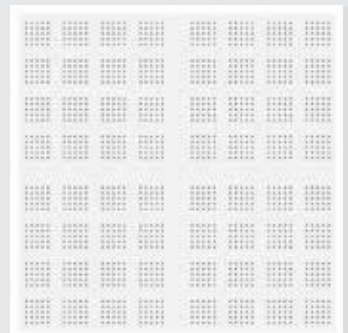
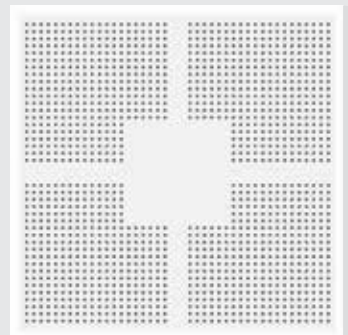
Grid Ceilings and Wall Panellings

### SIZES ( in mm )

595 x 595, 610 x 610, 1195 x 595 & 1220 x 610

### THICKNESS ( in mm )

6, 8, & 10





## BOARDS & TILES

### SALIENT FEATURES

- Fire Resistant
- Water Resistant
- Termite Resistant and
- Superior Flexural Strength

### APPLICATION

- Partitions, Wall Panellings
- Seamless Ceilings
- Eaves & Soffit Lining Mezzanine Floors and Prefabricated Structures



### SIZES ( in mm )

**Width** 595, 610, 1195 & 1220

**Length** 595, 610, 1195, 1220, 1830 & 2440

### THICKNESS ( in mm )

4, 6, 8, 10, 12, 16 & 18



### SIZES ( in mm )

150 x 2440 & 150 x 3050

### THICKNESS ( in mm )

8



## PLANKS

### SALIENT FEATURES

- Wood-like Grain Structure
- Fire Resistant
- Water Resistant
- Termite Resistant
- Solid Toughness and Excellent Workability

### APPLICATION

- External Cladding, Facade
- Decorative Fences
- Wall Cladding
- Eaves and Soffit Lining and Gate Cladding



## DESIGNER TILES

### DESIGNS AVAILABLE:

Marina, Valley View and Cedar finishes

### SALIENT FEATURES:

- Fire Resistant,
- Water Resistant and Termite Resistant

### APPLICATION

- Grid Ceilings
- Wall Linings and Wall Panellings



### SIZES ( in mm )

595 x 595, 610 x 610, 1195 x 595 & 1220 x 610

### THICKNESS ( in mm )

4 & 6



**BOARDS**

**SALIENT FEATURES**

- Fire Resistant
- Water Resistant
- High Strength
- Sound Resistant
- Very Low Moisture Movement

**APPLICATION**

- Exterior Facade / Cladding
- Wet Areas
- High traffic interiors (impact-prone areas)
- Mezzanine Floors



**SIZES ( in mm )**

**Width** 1220

**Length** 2440

**THICKNESS ( in mm )**

6, 9, 12 & 15

\* Other thickness on request



**SALIENT FEATURES**

- Fire Resistant
- Water Resistant
- Thermal Resistant
- Termite Resistant
- Bacterial Resistant
- Withstands adverse weather conditions

**APPLICATION**

- Pre-fabricated Locations
- Internal walls
- Commercial Units

**SIZES ( in mm )**

**Width** 600

**Length** 2400 & 3000

**THICKNESS ( in mm )**

50 & 75

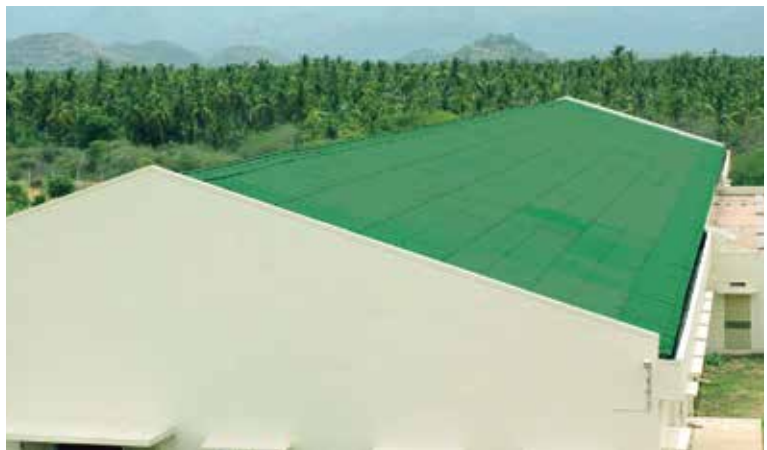


**SALIENT FEATURES**

- Also Available in Green & Terracotta Colours.
- Rust-proof, Corrosion Resistant, Weather Resistant,
- High Strength, Economical, Ensure Cool Environment,
- Unaffected by Lightning and Power Wires

**APPLICATION**

- Commercial Units, Industrial/Manufacturing Units,
- Residences, Railway Stations, Bus Stations, Godowns,
- Cattle Sheds-Roof and Claddings



**SIZES ( in mm )**

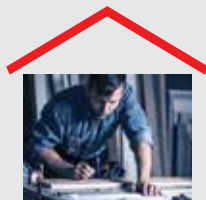
1050 x 1500, 1050 x 1750, 1050 x 2000,  
1050 x 2500 & 1050 x 3000

**THICKNESS ( in mm )**

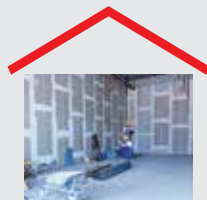
6 mm - (7 cor)

**RAMCO**  
**SmartBuild**  
Tech Services

Ramco SmartBuild is an end-to-end Services and Solutions initiative for Green Dry Construction



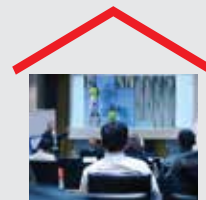
Design & Material  
Consultancy



Project  
Execution



Site Quality  
Assurance



Training in  
Dry Construction methods

**Ramco Industries Limited**

Auras Corporate Centre, 98-A, Dr. Radhakrishnan Salai, Mylapore, Chennai - 600 004. India.

+91 44 - 4298 3109 / 91767 75882    info@ril.co.in    www.ramcoindltd.com

Follow us on    /ramcosmartbuild